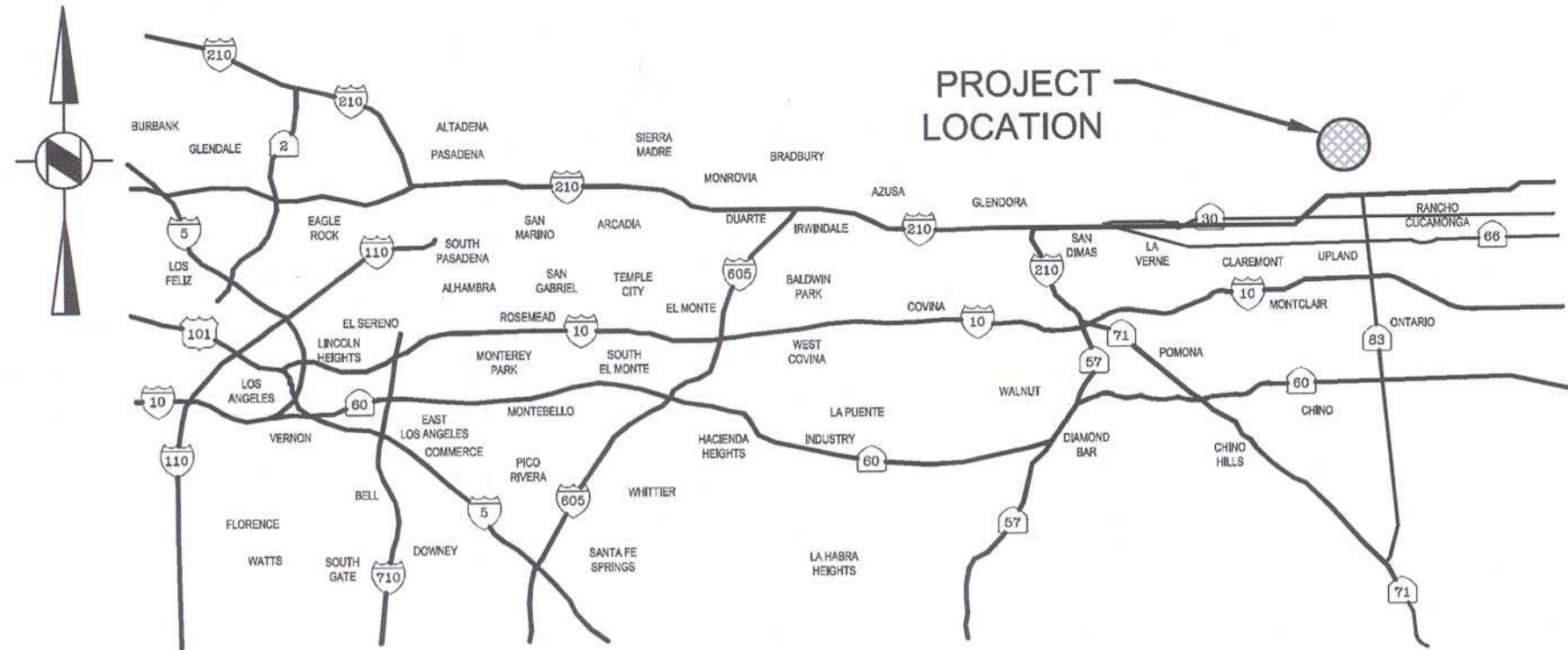


X:\2018\2018155.00-Campus Ave Pipeline-SAWCO.DWG (Sheets) Water Pipeline



VICINITY MAP
NOT TO SCALE

GENERAL NOTES:

- ALL WORK SHALL BE DONE IN ACCORDANCE WITH THE "STANDARD SPECIFICATIONS FOR PUBLIC WORKS CONSTRUCTION", (SSPWC) CURRENT EDITION.
- IT SHALL BE THE RESPONSIBILITY OF THE CONTRACTOR TO KEEP ADJACENT STREETS CLEAN AT ALL TIMES. TRUCKS AND EQUIPMENT USING THE STREET SHALL NOT TRACK DIRT OR DEBRIS THEREON. STREET CLEANING SHALL BE BY STREET SWEEPER ONLY AS NEEDED DURING THE WORK DAY AND AT THE END OF EACH WORK DAY.
- CONTRACTOR AGREES THAT HE SHALL ASSUME SOLE AND COMPLETE RESPONSIBILITY FOR JOB SITE CONDITIONS DURING THE COURSE OF CONSTRUCTION OF THIS PROJECT INCLUDING SAFETY OF ALL PERSONS AND PROPERTY; THAT THIS REQUIREMENT SHALL APPLY CONTINUOUSLY AND NOT BE LIMITED TO NORMAL WORKING HOURS; AND THAT THE CONTRACTOR SHALL DEFEND, INDEMNIFY AND HOLD THE OWNER, ENGINEER OF RECORD OR CITY OF INDUSTRY HARMLESS FROM ANY AND ALL LIABILITY, REAL OR ALLEGED, IN CONNECTION WITH THE PERFORMANCE OF WORK IN THIS PROJECT, EXCEPTING FOR LIABILITY ARISING FROM THE SOLE NEGLIGENCE OF THE OWNER OR THE ENGINEER OF RECORD.
- IT SHALL BE THE RESPONSIBILITY OF THE CONTRACTOR TO LOCATE ALL UTILITIES AND MONUMENTS OF EVERY NATURE WHETHER SHOWN HEREON OR NOT, AND TO PROTECT THEM FROM DAMAGE. THE CONTRACTOR SHALL BEAR THE TOTAL EXPENSE OF REPAIR OR REPLACEMENT OF UTILITIES AND MONUMENTS DAMAGED OR DESTROYED. ALL MONUMENTS THAT ARE DAMAGED OR DESTROYED SHALL BE REPLACED AND ALL REQUIRED DOCUMENTATION SHALL BE FILED WITH THE COUNTY SURVEYOR'S OFFICE.
- ANY CHANGES FROM THE PLAN, STANDARD NOTES OR STANDARD DESIGN AND SPECIFICATIONS SHALL BE APPROVED BY THE WATER MANAGER IN WRITING PRIOR TO INSTALLATION.
- CONTRACTOR SHALL OBTAIN AN ENCROACHMENT PERMIT FROM THE CITY OF UPLAND PUBLIC WORKS/LAND DEVELOPMENT AND TRANSPORTATION DIVISION FOR ALL EXCAVATION WITHIN CITY OF UPLAND STREETS.
- CONTACT UTILITIES USING UNDERGROUND SERVICE ALERT U.S.A. (811) 72 HOURS PRIOR TO COMMENCING EXCAVATION.
- ANY CONNECTION(S) TO EXISTING WATER MAINS SHALL BE MADE ONLY WITH THE SPECIFIC APPROVAL OF THE SAN ANTONIO WATER COMPANY INSPECTOR.
- CONTRACTOR SHALL EMPLOY BEST MANAGEMENT PRACTICES (BMP'S) AND ALL WORK SHALL COMPLY WITH THE REQUIREMENTS OF NPDES.
- WHEN CROSSING EXISTING UTILITY LINES, CONTRACTOR SHALL USE SUPPORT FOR CONDUIT ACROSS TRENCHES PER APWA STD. PLAN 224-2.
- CONTRACTOR TO REMOVE ALL UNDERGROUND SERVICE ALERT (USA) MARKINGS/GRAFFITI BEFORE THE FINAL APPROVAL OF THE PROJECT BY THE INSPECTOR.
- ALL WORK AND MATERIAL SHALL CONFORM TO THE HIGHER STANDARD IN EITHER "STANDARD SPECIFICATIONS FOR THE CONSTRUCTION OF WATER MAINS AND APPURTENANCES, LATEST EDITION" ON FILE AT THE SAN ANTONIO WATER COMPANY, OR "STANDARD SPECIFICATIONS FOR PUBLIC WORKS CONSTRUCTION," LATEST ISSUE AND AMENDMENTS, KNOWN AS THE "GREEN BOOK."
- THE CONTRACTOR SHALL BE FULLY RESPONSIBLE FOR LOCATING AND PROTECTING FROM DAMAGE ALL EXISTING FACILITIES AND IMPROVEMENTS WHETHER OR NOT SHOWN ON THE PLANS. THE FACILITIES AND IMPROVEMENTS ARE BELIEVED TO BE CORRECTLY SHOWN BUT THE CONTRACTOR IS REQUIRED TO SATISFY HIMSELF AS TO THE COMPLETENESS AND ACCURACY OF THE LOCATIONS.
- CITY OF UPLAND MAY HAVE WATER LINES AND SEWER LINES IN THIS AREA. CONTACT THEM FOR LOCATION, SIZE, AND DEPTH OF LINES, AND OTHER PERTINENT INFORMATION.
- QUANTITIES SHOWN ON THE PLANS ARE ESTIMATED. THE CONTRACTOR SHALL SATISFY HIMSELF AS TO THE ACCURACY OF THE QUANTITIES BEFORE BIDDING ON ANY ITEM.
- THE CONTRACTOR SHALL OBTAIN A PERMIT FROM THE STATE OF CALIFORNIA, DEPARTMENT OF INDUSTRIAL RELATIONS, DIVISION OF INDUSTRIAL SAFETY, BEFORE STARTING THE EXCAVATION OF ANY TRENCH FIVE FEET OR MORE IN DEPTH. SHORING BRACING, SLOPING AND ALL OTHER PROVISIONS FOR WORKER PROTECTION SHALL CONFORM TO THE PROVISIONS CONTAINED IN ARTICLE 6 OF THE STATE OF CALIFORNIA, DEPARTMENT OF INDUSTRIAL RELATIONS CONSTRUCTION SAFETY ORDERS, EFFECTIVE AUGUST 8, 1965, AND AS AMENDED JULY 27, 1973. IF VARIATION THESE STANDARDS IS DESIRED, A DETAILED PLAN SHALL BE PREPARED BY A REGISTERED CIVIL ENGINEER AND SUBMITTED TO THE PUBLIC WORKS DIRECTOR FOR APPROVAL.
- ALL WATER AND SEWER MAINS SHALL MEET THE STATE OF CALIFORNIA, DEPARTMENT OF HEALTH REQUIREMENTS FOR THE SEPARATION BETWEEN WATER MAINS AND SANITARY SEWER.
- THE CONTRACTOR IS REQUIRED TO REPAIR THE EXISTING PAVEMENT WHICH IS REMOVED OR DAMAGED BY HIS OPERATIONS IN ACCORDANCE WITH STANDARD DRAWING CU-Z-3A UNLESS ARRANGEMENTS ARE MADE WHICH COORDINATE STREET PAVING IN A MANNER ACCEPTABLE TO AND APPROVED BY THE PUBLIC WORKS DIRECTOR.
- ACCESS TO WATER VALVES SHALL BE MAINTAINED DURING ALL PHASES OF THE PROJECT. VALVE BOXES TO REMAIN FREE AND CLEAR OF DEBRIS.
- SEPARATION BETWEEN WATER INSTALLATIONS AND OTHER UTILITIES SHALL BE MAINTAINED (PER WATER DIVISION STD. W.25).
- MINIMUM COVER OF WATER LINES SHALL BE 36 INCH MIN. COVER.

PRIVATE ENGINEERING NOTE

CONSTRUCTION CONTRACTOR AGREES THAT IN ACCORDANCE WITH GENERALLY ACCEPTED CONSTRUCTION PRACTICES, CONSTRUCTION CONTRACTOR WILL BE REQUIRED TO ASSUME SOLE AND COMPLETE RESPONSIBILITY FOR JOB SITE CONDITIONS DURING THE COURSE OF CONSTRUCTION OF THE PROJECT INCLUDING SAFETY OF ALL PERSONS AND PROPERTY. THAT THIS REQUIREMENT SHALL BE MADE TO APPLY CONTINUOUSLY AND NOT BE LIMITED TO NORMAL WORKING HOURS. AND CONSTRUCTION CONTRACTOR FURTHER AGREES TO DEFEND, INDEMNIFY AND HOLD DESIGN PROFESSIONAL HARMLESS FROM ANY AND ALL LIABILITY REAL OR ALLEGED IN CONNECTION WITH THE PERFORMANCE OF WORK ON THIS PROJECT EXCEPTING LIABILITY ARISING FROM THE SOLE NEGLIGENCE OF DESIGN PROFESSIONAL.



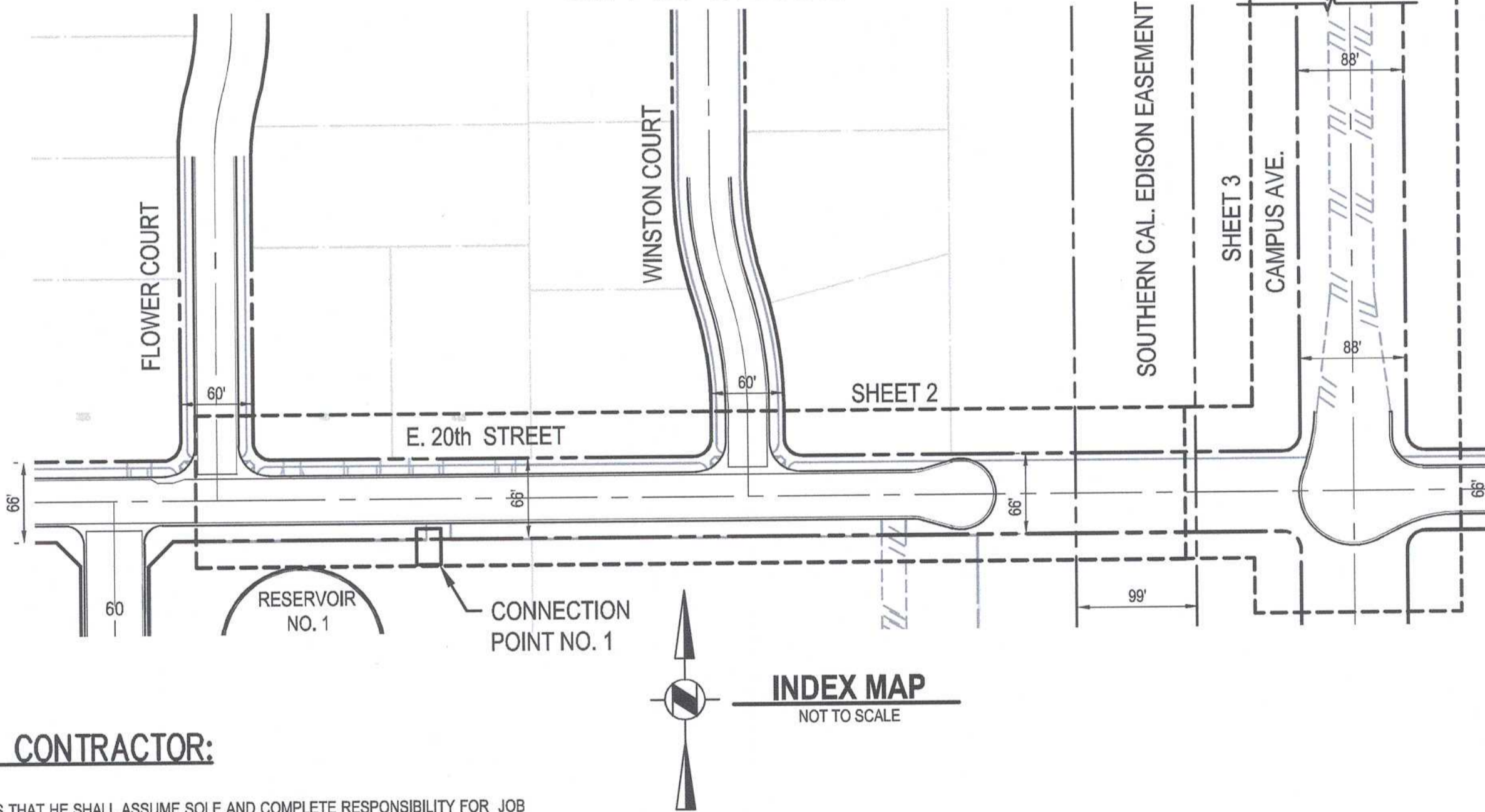
PRIVATE ENGINEERS NOTE:

- THESE DOCUMENTS HAVE BEEN PREPARED FOR A SPECIFIC PROJECT AND SHALL NEITHER BE ALTERED NOR REUSED FOR ANY OTHER PURPOSE. ALSO, THESE DOCUMENTS DO NOT REPRESENT AS-BUILT CONDITIONS. IF THESE DOCUMENTS ARE ALTERED INTENTIONALLY OR UNINTENTIONALLY, OR REUSED WITHOUT THE DESIGN ENGINEER'S WRITTEN APPROVAL, IT WILL BE AT THE SOLE RISK AND RESPONSIBILITY OF THE USER. THE ACT OF ALTERING OR REUSING IS CONSTRUED AS INDEMNIFYING AND HOLDING THE DESIGN ENGINEERING FIRM AND ITS EMPLOYEES HARMLESS FROM ALL CLAIMS, DAMAGES, AND EXPENSES, INCLUDING ATTORNEY FEES, ARISING OUT OF SUCH ACT.

SAN ANTONIO WATER COMPANY CAMPUS AVENUE PIPELINE PROJECT

BENCHMARK No. 17D-86
2" CITY OF UPLAND BRASS DISC SET IN SE CORNER OF
PCC CATCH BASIN, 40' E/O & CAMPUS
AVE. AND 82' N/O & 22ND STREET
ELEV. = 1783.899 (PRE/POST 1986)

BENCHMARK No. 14D-86
2" CITY OF UPLAND BRASS DISC SET IN PCC BASE FOR
S.C.E. TOWER LEG, 396' E/O & WINSTON
AVE. AND 87' N/O 20TH STREET
ELEV. = 1665.518 (PRE/POST 1986)



NOTICE TO CONTRACTOR:

CONTRACTOR AGREES THAT HE SHALL ASSUME SOLE AND COMPLETE RESPONSIBILITY FOR JOB SITE CONDITIONS DURING THE COURSE OF CONSTRUCTION OF THIS PROJECT, INCLUDING SAFETY OF ALL PERSONS AND PROPERTY; THAT THIS REQUIREMENT SHALL APPLY CONTINUOUSLY AND NOT BE LIMITED TO NORMAL WORKING HOURS; AND THAT THE CONTRACTOR SHALL DEFEND, INDEMNIFY, AND HOLD THE OWNER, AND THE ENGINEER HARMLESS FROM ANY AND ALL LIABILITY REAL OR ALLEGED, IN CONNECTION WITH THE PERFORMANCE OF WORK ON THIS PROJECT, EXCEPTING FOR LIABILITY ARISING FROM THE SOLE NEGLIGENCE OF THE OWNER OR THE ENGINEER.

THE EXISTENCE AND LOCATION OF ANY UNDERGROUND UTILITY PIPES OR STRUCTURES SHOWN ON THESE PLANS ARE OBTAINED BY A SEARCH OF THE AVAILABLE RECORDS. TO THE BEST OF OUR KNOWLEDGE THERE ARE NO EXISTING UTILITIES EXCEPT AS SHOWN ON THESE PLANS. THE CONTRACTOR IS REQUIRED TO TAKE DUE PRECAUTIONARY MEASURES TO PROTECT THE UTILITY LINES SHOWN AND ANY OTHER LINES NOT OF RECORD OR NOT SHOWN ON THESE PLANS. THE CONTRACTOR SHALL BE RESPONSIBLE FOR NOTIFYING "UNDERGROUND SERVICE ALERT" AT 811 TWO WORKING DAYS PRIOR TO ANY EXCAVATION OR CONSTRUCTION.

RESURFACING NOTES:

- PAVEMENT REMOVALS FOR TRENCH RESURFACING SHALL BE AT RIGHT ANGLES TO OR PARALLEL WITH THE CENTERLINE OF THE STREET. NO CURVILINEAR TRENCH SURFACING WILL BE PERMITTED.
- ALL PAVEMENT CUTS FOR TRENCH RESURFACING SHALL BE SAW CUT LEAVING A CLEAN STRAIGHT LINE.
- ANY PROPOSED STREET CLOSURES REQUIRE A STREET CLOSURE PERMIT FROM THE CITY OF UPLAND AT LEAST 48 HOURS PRIOR TO THE START OF CONSTRUCTION.
- A PRE-CONSTRUCTION MEETING SHALL BE SCHEDULED WITH THE PUBLIC WORKS DEPARTMENT AT LEAST 72 HOURS PRIOR TO START OF CONSTRUCTION.

SPECIAL NOTE:

ALL BEARINGS AND DISTANCES SHOWN ON THESE PLANS ARE BASED ON PROJECT SURVEY CONTROL POINTS AND ARE NOT TO BE USED TO LOCATE PROPERTY CORNERS.

LEGEND OF SYMBOLS AND ABBREVIATIONS

SEE SHEET NUMBER 7

BMP FOR DISCHARGE OF CONSTRUCTION WATER TO COMPLY WITH THE CONSTRUCTION GENERAL PERMIT REQUIREMENTS.

UTILITY CONTACTS

SAN ANTONIO WATER COMPANY
139 N. EUCLID AVE.
UPLAND, CA 91786
CONTACT: BRAIN LEE
PHONE: (909) 982-4107

STANDARD DRAWINGS:

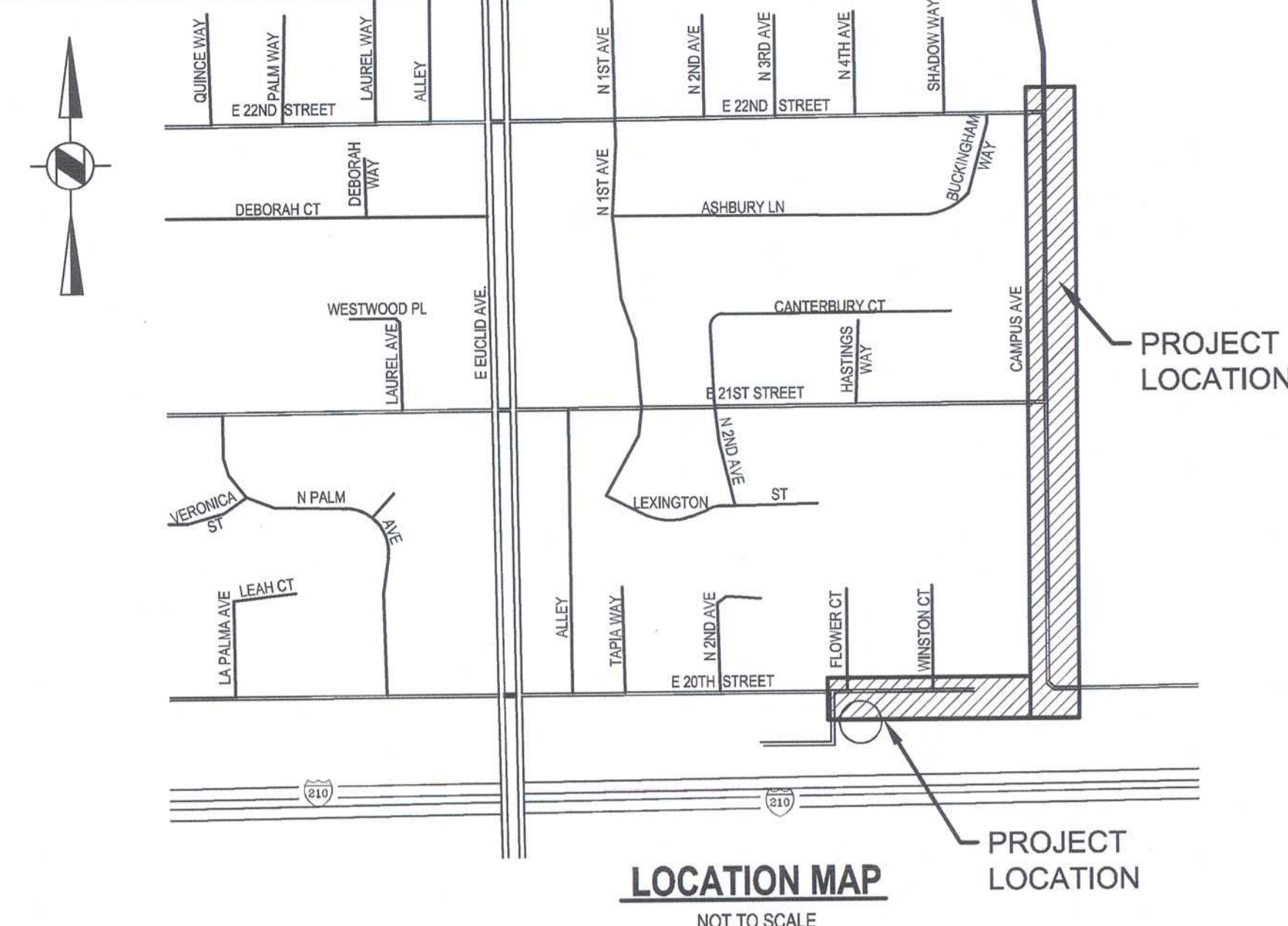
SPPPWC 224-2 SUPPORT FOR CONDUITS ACROSS TRENCHES

UPLAND PUBLIC WORKS DEPARTMENT

CITY STD. CU-Z-3A TRENCH BEDDING AND PAVEMENT REPAIR DETAIL

DISTURBED SURFACE AREA

TRENCH SURFACE: 5,604 SQ. FT.



CONSTRUCTION NOTES: (MASTER LIST)

- REMOVE EXISTING PIPING, BENDS, & FITTINGS AS REQUIRED TO COMPLETE INSTALL OF NEW PIPING.
- FURNISH AND INSTALL 6"x8" D.I. REDUCER, MxMJ.
- FURNISH AND INSTALL 8" PVC PIPE, C900 WITH TRACER WIRE DETAIL 4 SHEET 6.
- CUT AND CAP EXISTING STEEL WATER LINE PIPE.
- REMOVE AND SALVAGE EXISTING VALVE.
- FURNISH AND INSTALL 14" STEEL BLIND FLANGE.
- SAWCUT, REMOVE AND REPLACE A.C. PAVEMENT PER CITY OF UPLAND STANDARD CU-Z-3A PER DETAIL 2 ON SHEET 7.
- FURNISH AND INSTALL 12" STEEL BLIND FLANGE.
- INSTALL 8"-45" DUCTILE IRON BEND, MxMJ WITH THRUST BLOCK PER DETAIL NO. 5 ON SHEET 6.
- INSTALL 8"-90" DUCTILE IRON BEND, MxMJ WITH THRUST BLK. PER DETAIL NO. 5 ON SHT. 6.
- FURNISH AND INSTALL 8"x8"x8" D.I. TEE, FLGxFLGxFLG, WITH THRUST BLOCK PER DETAIL 5 ON SHEET 6.
- FURNISH AND INSTALL 8" GATE VALVE, FLGxMJ WITH VALVE BOX AND COVER PER DETAIL 3 ON SHEET 6.
- FURNISH AND INSTALL 8" FLANGE COUPLING ADAPTOR, ROMAC FC501, OAE.
- FURNISH AND INSTALL 8" TRANSITION COUPLING.
- FURNISH AND INSTALL 4" PVC PIPE C900 WATER LINE WITH TRACER WIRE PER DETAIL 4 ON SHEET 6.
- FURNISH AND INSTALL 4" GATE VALVE, FLGxMJ WITH VALVE BOX AND COVER PER DETAIL 3 ON SHEET 6.
- FURNISH AND INSTALL 8"x8"x4" D.I. TEE, FLGxFLGxFLG, WITH THRUST BLOCK PER DETAIL 5 ON SHEET 6.
- FURNISH AND INSTALL WATER SERVICE PER SAWCO STD. DWG. 12
- FURNISH AND INSTALL PLUG AND BLOW-OFF ASSY. PER SAWCO STANDARD DRAWINGS 8 AND 11.
- INSTALL 6"-45" DUCTILE IRON BEND, FLGxMJ WITH THRUST BLOCK PER DETAIL NO. 5 ON SHEET 6.
- FURNISH AND INSTALL 6" STEEL SLIP-ON WELDING FLANGE.
- FURNISH AND INSTALL 6" PVC PIPE, C900 WITH TRACER WIRE.
- FURNISH AND INSTALL TEST STATION PER DETAIL 4 ON SHEET 6.
- FURNISH AND INSTALL 14" STEEL SLIP-ON WELDING FLANGE.
- FURNISH AND INSTALL 6" STEEL BLIND FLANGE.
- FURNISH AND INSTALL 6" FLANGE X MJ ADAPTER.
- FURNISH AND INSTALL 12" SLIP-ON WELDING FLANGE.

LIST OF DRAWINGS

- | | |
|----------|--|
| SHEET 1: | TITLE SHEET: VICINITY MAP, LOCATION MAP, MASTER CONSTRUCTION NOTES |
| SHEET 2: | PLAN AND PROFILE SHEET |
| SHEET 3: | PLAN AND PROFILE SHEET |
| SHEET 4: | PLAN AND PROFILE SHEET |
| SHEET 5: | PLAN AND PROFILE SHEET |
| SHEET 6: | DETAILS AND TYPICAL SECTION SHEET |
| SHEET 7: | PLAN, SECTIONS AND DETAIL SHEET |



PREPARED UNDER THE DIRECTION OF:
TERRY L. KERGER, P.E.
R.C.E. NO. 34896
APPROVED BY: SAN ANTONIO WATER COMPANY
BRAIN LEE - GM
DATE 1/22/19
DATE 6/11/19

PLANS PREPARED BY:
CIVILTEC engineering inc.
Civil, Water, Wastewater, Drainage, and Transportation Engineering
Construction Management • Surveying
California • Arizona
118 West Lime Avenue
Monrovia, CA 91016
Phone: 626.357.0588
Fax: 626.303.7957
Web: www.civiltec.com

DATE: JANUARY 2019
SCALE: AS SHOWN
DRAWN BY: CIVILTEC
DESIGN BY: CIVILTEC
CHECKED BY: TLK



SAN ANTONIO WATER COMPANY		DRAWING NO.
CAMPUS AVENUE WATER LINE PROJECT		CO #1800-P
TITLE SHEET		SHEET
FOR: SAN ANTONIO WATER COMPANY		1 of 7
		W.O.F.B. FILE NO. -

X:\2019\2019155-00-Campus Avenue Pipeline-SWACO DWG Sheets\Water Pipeline



PRIVATE ENGINEERING NOTE

CONSTRUCTION CONTRACTOR AGREES THAT IN ACCORDANCE WITH GENERALLY ACCEPTED CONSTRUCTION PRACTICES, CONSTRUCTION CONTRACTOR WILL BE REQUIRED TO ASSUME SOLE AND COMPLETE RESPONSIBILITY FOR JOB SITE CONDITIONS DURING THE COURSE OF CONSTRUCTION OF THE PROJECT INCLUDING SAFETY OF ALL PERSONS AND PROPERTY. THAT THIS REQUIREMENT SHALL BE MADE TO APPLY CONTINUOUSLY AND NOT BE LIMITED TO NORMAL WORKING HOURS. AND CONSTRUCTION CONTRACTOR FURTHER AGREES TO DEFEND, INDEMNIFY AND HOLD DESIGN PROFESSIONAL HARMLESS FROM ANY AND ALL LIABILITY REAL OR ALLEGED IN CONNECTION WITH THE PERFORMANCE OF WORK ON THIS PROJECT EXCEPTING LIABILITY ARISING FROM THE SOLE NEGLIGENCE OF DESIGN PROFESSIONAL.

MARK	REVISIONS	APPR	DATE



PREPARED UNDER THE DIRECTION OF:

TERRY L. KERGER, P.E. DATE 1/22/19

R.C.E. NO. 34896

APPROVED BY: SAN ANTONIO WATER COMPANY

BRIAN LEE - GM DATE 6/11/19

PLANS PREPARED BY:



118 West Lime Avenue
Monrovia, CA 91016
Phone: 626.357.0588
Fax: 626.303.7957
Web: www.civiltec.com

DATE:	JANUARY 2019
SCALE:	AS SHOWN
DRAWN BY:	CIVILTEC
DESIGN BY:	CIVILTEC
CHECKED BY:	TLK



SAN ANTONIO WATER COMPANY
CAMPUS AVENUE WATER LINE PROJECT

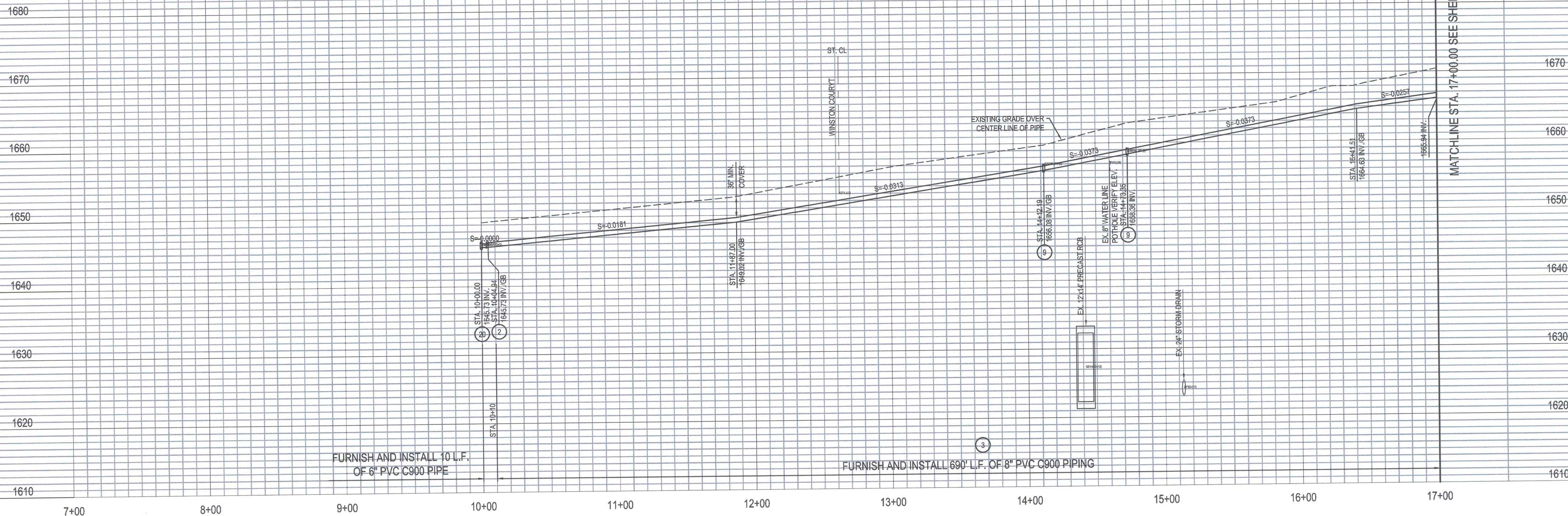
20TH STREET - PLAN AND PROFILE
STA. 10+00.00 TO STA. 17+00.00

FOR: SAN ANTONIO WATER COMPANY

W.O.F.B. FILE NO. -

DRAWING NO.
CO #1800-P

SHEET
2 of 7



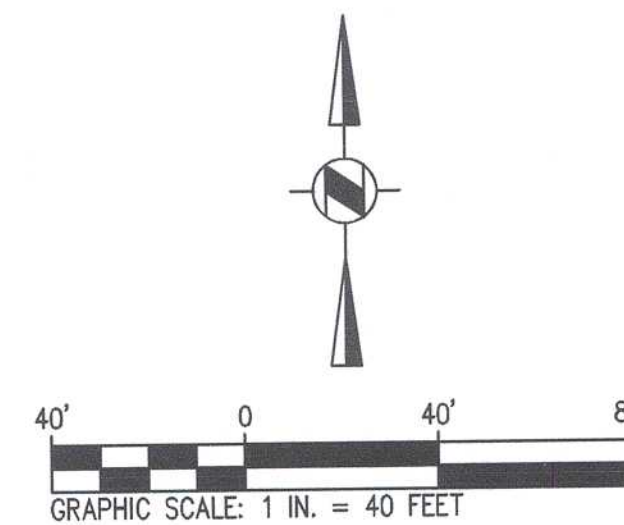
PROFILE SCALES	
HORIZ.	1"=40'
VERT.	1"=8'

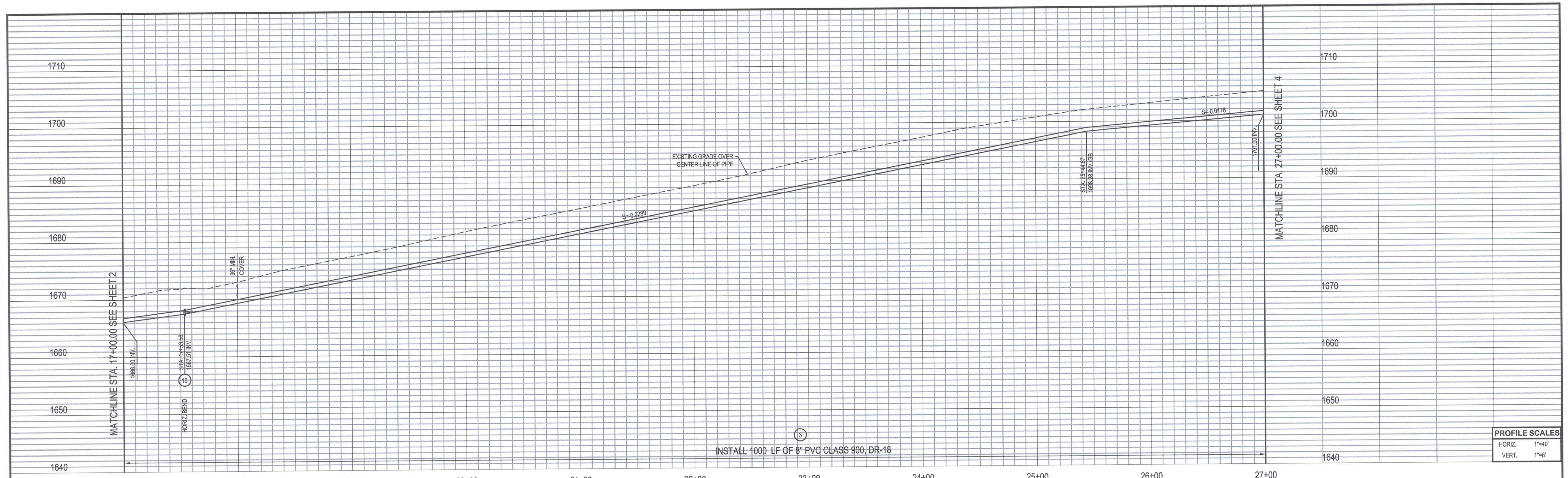
CONSTRUCTION NOTES:

- 1 REMOVE EXISTING PIPING, BENDS & FITTINGS AS REQUIRED TO COMPLETE INSTALL OF NEW PIPING.
- 2 FURNISH AND INSTALL 6"x8" D.I. REDUCER, MxMJ.
- 3 FURNISH AND INSTALL 8" PVC PIPE, C900 WITH TRACER WIRE.
- 4 CUT AND CAP EXISTING STEEL WATER LINE PIPE.
- 5 REMOVE AND SALVAGE EXISTING VALVE.
- 6 FURNISH AND INSTALL 14" STEEL BLIND FLANGE.
- 7 SAWCUT, REMOVE AND REPLACE A.C. PAVEMENT PER CITY OF UPLAND STANDARD CU-2-3A PER DETAIL 4 ON SHEET 7.
- 8 FURNISH AND INSTALL 12" STEEL BLIND FLANGE.
- 9 FURNISH AND INSTALL 8'-45" D.I. BEND, MxMJ WITH THRUST BLOCK PER DETAIL 5 ON SHEET 6.
- 20 FURNISH AND INSTALL 6'-45" D.I. BEND, FLGxFLG WITH THRUST BLOCK PER DETAIL 5 ON SHEET 6.
- 21 FURNISH AND INSTALL 6" STEEL SLIP-ON WELDING FLANGE.
- 22 FURNISH AND INSTALL 6" PVC PIPE, C900 WITH TRACER WIRE.
- 23 FURNISH AND INSTALL TEST STATION PER DETAIL 4 ON SHEET 6.
- 24 FURNISH AND INSTALL 14" STEEL SLIP-ON WELDING FLANGE.
- 25 FURNISH AND INSTALL 6" STEEL BLIND FLANGE.
- 26 FURNISH AND INSTALL 6" FLANGE X M.J. ADAPTER.
- 27 FURNISH AND INSTALL 12" SLIP-ON WELDING FLANGE.

NOTES:

1. ALL STATIONING SHOWN ON THESE PLANS IS BASED ON CENTER LINE OF PROPOSED WATER LINE.
2. ROPE PIPE JOINTS TO MAINTAIN HORIZONTAL ALIGNMENT 2 1/2" MAX. PER PIPE JOINT.
3. CONTRACTOR SHALL POT HOLE TO VERIFY THE LOCATION, DEPTH, AND CONDITION OF EXISTING WATER MAIN AT ALL CONNECTION POINTS.
4. WHEN CONNECTING NEW WATER MAIN, THE CONTRACTOR WILL NEED TO REMOVE INTERFERING PORTIONS OF EXISTING WATER LINE TO COMPLETE CONNECTION.





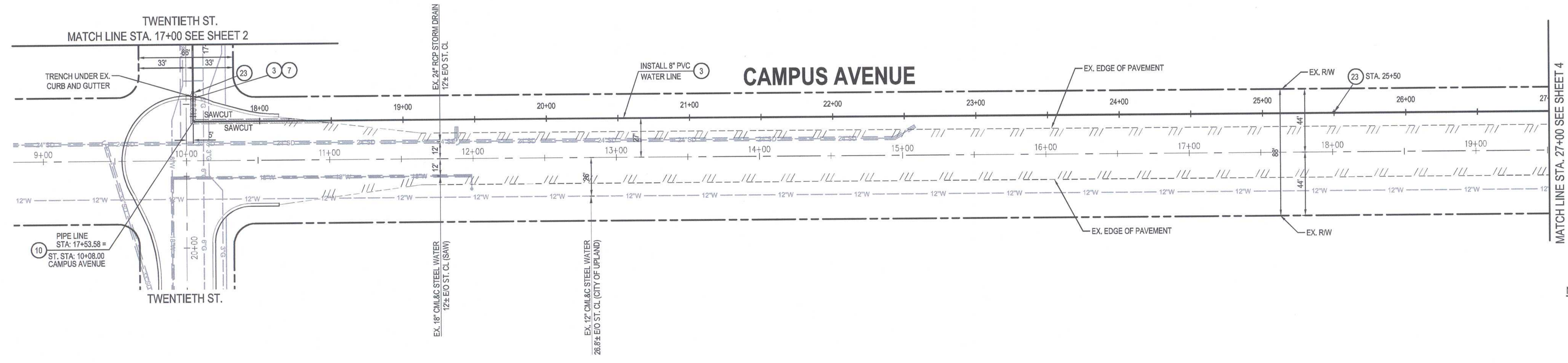
PROFILE SCALES	
HORIZ.	1"=40'
VERT.	1"=8'

CONSTRUCTION NOTES:

- 3 FURNISH AND INSTALL 8" PVC PIPE, C900 WITH TRACER WIRE DETAIL 4 SHEET 6.
- 7 SAWCUT, REMOVE AND REPLACE A.C. PAVEMENT PER CITY OF UPLAND STANDARD CU-Z-3A PER DETAIL 2 ON SHEET 7.
- 10 FURNISH AND INSTALL 8"-80" D.I. BEND, M&M WITH THRUST BLOCK PER DETAIL 5 ON SHEET 6.
- 23 FURNISH AND INSTALL TEST STATION PER DETAIL 4 ON SHEET 6.

NOTES:

- 1. ALL STATIONING SHOWN ON THESE PLANS IS BASED ON CENTER LINE OF PROP. WATER LINE.
- 2. ROPE PIPE JOINTS TO MAINTAIN HORIZONTAL ALIGNMENT 2 1/2" MAX. PER PIPE JOINT.
- 3. CONTRACTOR SHALL POT HOLE TO VERIFY THE LOCATION, DEPTH, AND CONDITION OF EXISTING WATER MAIN AT ALL CONNECTION POINTS.
- 4. WHEN CONNECTING NEW WATER MAIN, THE CONTRACTOR WILL NEED TO REMOVE INTERFERING PORTIONS OF EXISTING WATER LINE TO COMPLETE CONNECTION.



PRIVATE ENGINEERING NOTE

CONSTRUCTION CONTRACTOR AGREES THAT IN ACCORDANCE WITH GENERALLY ACCEPTED CONSTRUCTION PRACTICES, CONSTRUCTION CONTRACTOR WILL BE REQUIRED TO ASSUME SOLE AND COMPLETE RESPONSIBILITY FOR JOB SITE CONDITIONS DURING THE COURSE OF CONSTRUCTION OF THE PROJECT INCLUDING SAFETY OF ALL PERSONS AND PROPERTY. THAT THIS REQUIREMENT SHALL BE MADE TO APPLY CONTINUOUSLY AND NOT BE LIMITED TO NORMAL WORKING HOURS, AND CONSTRUCTION CONTRACTOR FURTHER AGREES TO DEFEND, INDEMNIFY AND HOLD DESIGN PROFESSIONAL HARMLESS FROM ANY AND ALL LIABILITY REAL OR ALLEGED IN CONNECTION WITH THE PERFORMANCE OF WORK ON THIS PROJECT EXCEPTING LIABILITY ARISING FROM THE SOLE NEGLIGENCE OF DESIGN PROFESSIONAL.



MARK	REVISIONS	APPR	DATE



PREPARED UNDER THE DIRECTION OF:
TERRY L. KERGER, P.E.
R.C.E. NO. 34896

APPROVED BY: SAN ANTONIO WATER COMPANY
BRIAN LEE - GM
DATE: 6/11/19

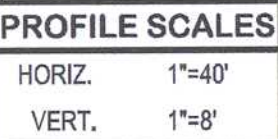
PLANS PREPARED BY:
CIVILTEC engineering inc.
Civil, Water, Wastewater, Drainage, and Transportation Engineering
Construction Management • Surveying
California • Arizona

118 West Lime Avenue
Monrovia, CA 91016
Phone: 626.357.0588
Fax: 626.303.7957
Web: www.civiltec.com

DATE:	JANUARY 2019
SCALE:	AS SHOWN
DRAWN BY:	CIVILTEC
DESIGN BY:	CIVILTEC
CHECKED BY:	TLK

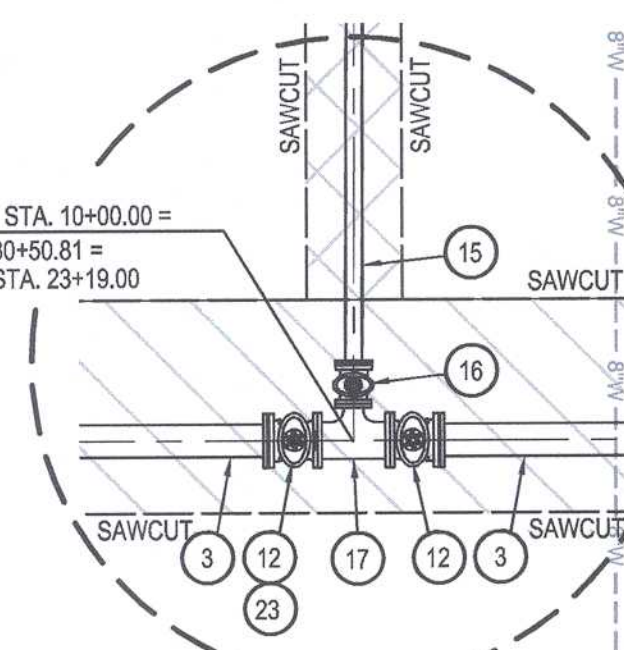
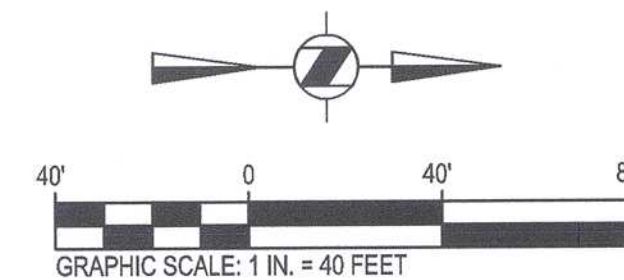


SAN ANTONIO WATER COMPANY		DRAWING NO.
CAMPUS AVENUE WATER LINE PROJECT		CO #1800-P
PLAN AND PROFILE 20TH STREET TO CAMPUS AVENUE STA. 17+00.00 TO STA. 27+00.00		SHEET 3 OF 7
FOR:	SAN ANTONIO WATER COMPANY	W.O.F.B. FILE NO.



- 3 FURNISH AND INSTALL 8" PVC PIPE, C900 WITH TRACER WIRE.
- 7 SAWCUT, REMOVE AND REPLACE A.C. PAVEMENT PER CITY OF UPLAND STANDARD CU-Z-3A PER DETAIL 2 ON SHEET 7.
- 12 FURNISH AND INSTALL 8" GATE VALVE, FLGxMJ WITH VALVE BOX AND COVER PER DETAIL 3 ON SHEET 6.
- 15 FURNISH AND INSTALL 4" PVC PIPE C900 WATER LINE WITH TRACER WIRE PER DETAIL 4 ON SHEET 6.
- 16 FURNISH AND INSTALL 4" GATE VALVE, FLGxMJ WITH VALVE BOX AND COVER PER DETAIL 3 ON SHEET 6.
- 17 FURNISH AND INSTALL 8"x8"x4" D.I. TEE, FLGxFLGxFLG, WITH THRUST BLOCK PER DETAIL 5 ON SHEET 6.
- 23 FURNISH AND INSTALL TEST STATION PER DETAIL 4 ON SHEET 6.

1. ALL STATIONING SHOWN ON THESE PLANS IS BASED ON CENTER LINE OF PROP. WATER LINE.
2. ROPE PIPE JOINTS TO MAINTAIN HORIZONTAL ALIGNMENT 2 1/2" MAX. PER PIPE JOINT.
3. CONTRACTOR SHALL POTHOLE TO VERIFY THE LOCATION, DEPTH, AND CONDITION OF EXISTING WATER MAIN AT ALL CONNECTION POINTS.
4. WHEN CONNECTING NEW WATER MAIN, THE CONTRACTOR WILL NEED TO REMOVE INTERFERING PORTIONS OF EXISTING WATER LINE TO COMPLETE CONNECTION.

 $\frac{1}{4}$ 

CONSTRUCTION CONTRACTOR AGREES THAT IN ACCORDANCE WITH GENERALLY ACCEPTED CONSTRUCTION PRACTICES, CONSTRUCTION CONTRACTOR WILL BE REQUIRED TO ASSUME SOLE AND COMPLETE RESPONSIBILITY FOR JOB SITE CONDITIONS DURING THE COURSE OF CONSTRUCTION OF THE PROJECT INCLUDING SAFETY OF ALL PERSONS AND PROPERTY. THAT THIS REQUIREMENT SHALL BE MADE TO APPLY CONTINUOUSLY AND NOT BE LIMITED TO NORMAL WORKING HOURS, AND CONSTRUCTION CONTRACTOR FURTHER AGREES TO BE RESPONSIBLE FOR THE DESIGN PROFESSIONAL BEING HARMLESS FROM ANY AND ALL LIABILITY REAL OR ALLEGED IN CONNECTION WITH THE PERFORMANCE OF WORK ON THIS PROJECT EXCEPTING LIABILITY ARISING FROM THE SOLE NEGLIGENCE OF DESIGN PROFESSIONAL.

[illegible]

PREPARED UNDER THE DIRECTION OF: _____ DATE 1/22/19
Terry L. Kerger
 TERRY L. KERGER, P.E.
 R.C.E. NO. 34896

APPROVED BY: SAN ANTONIO WATER COMPANY
Brian Lee
 BRIAN LEE - GM DATE 6/11/19



CIVILTEC
engineering inc.

Civil, Water, Wastewater, Drainage,
and Transportation Engineering
Construction Management • Surveying
California • Arizona

118 West Lime Avenue
Monrovia, CA 91016
Phone: 626.357.0588
Fax: 626.303.7957
Web: www.civiltec.com

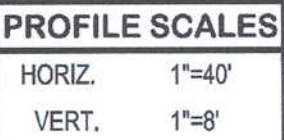
DATE:	JANUARY 2019
SCALE:	AS SHOWN
DRAWN BY:	CIVILTEC
DESIGN BY:	CIVILTEC
CHECKED BY:	TLK



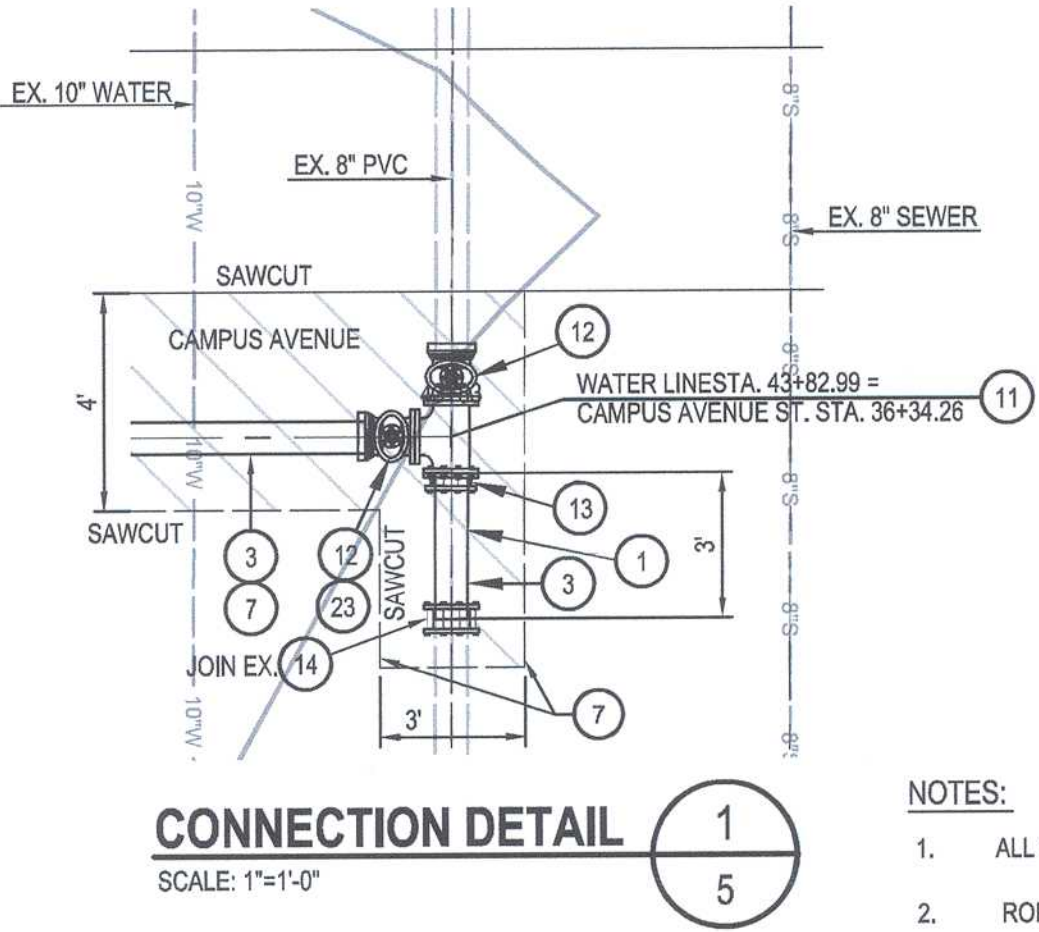
PLAN AND PROFILE
CAMPUS AVENUE
STA. 27+00.00 TO STA. 37+00.00

FOR: SAN ANTONIO WATER COMPANY

DRAWING NO.	CO #1800-F
SHEET	4 OF 7
E. NO.	-



- 1 REMOVE EXISTING PIPING, BENDS, & FITTINGS AS REQUIRED TO COMPLETE INSTALL. OF NEW PIPING.
- 3 FURNISH AND INSTALL 8" P.V.C PIPE, C900 WITH TRACER WIRE.
- 7 SAWCUT, REMOVE AND REPLACE A.C. PAVEMENT PER CITY OF UPLAND STANDARD CU-Z-3A PER DETAIL 4 ON SHEET 8.
- 11 FURNISH AND INSTALL 8"x6"x8" D.I. TEE, FLGxFLGxFLG, WITH THRUST BLOCK PER DETAIL 5 ON SHEET 6.
- 12 FURNISH AND INSTALL 8" GATE VALVE, FLGxMJ WITH VALVE BOX AND COVER PER DETAIL 3 ON SHEET 6.
- 13 FURNISH AND INSTALL 8" FLANGE COUPLING ADAPTOR, FLGxMJ
- 14 FURNISH AND INSTALL 8" TRANSITION COUPLING.
- 23 FURNISH AND INSTALL SET STATION PER DETAIL 4 ON SHEET 6.



CONNECTION DETAIL

CONSTRUCTION CONTRACTOR AGREES THAT IN ACCORDANCE WITH GENERALLY ACCEPTED CONSTRUCTION PRACTICES, CONSTRUCTION CONTRACTOR WILL BE REQUIRED TO ASSUME SOLE AND COMPLETE RESPONSIBILITY FOR JOB SITE CONDITIONS DURING THE COURSE OF CONSTRUCTION OF THE PROJECT INCLUDING SAFETY OF ALL PERSONS AND PROPERTY. THAT THIS REQUIREMENT SHALL BE MADE TO APPLY CONTINUOUSLY AND NOT BE LIMITED TO NORMAL WORKING HOURS, AND THAT CONSTRUCTION CONTRACTOR FURTHER AGREES TO DEFEND, INDEMNIFY AND HOLD DESIGN PROFESSIONAL HARMLESS FROM ALL LIABILITY REAL OR ALLEGED, IN CONNECTION WITH THE PERFORMANCE OF WORK ON THIS PROJECT EXCEPTING LIABILITY ARISING FROM THE SOLE NEGLIGENCE OF DESIGN PROFESSIONAL.

[illegible]

PREPARED UNDER THE DIRECTION OF: *Terry L. Kerger* DATE 1/22/19
TERRY L. KERGER, P.E.
R.C.E. NO. 34886

APPROVED BY: SAN ANTONIO WATER COMPANY
Brian Lee DATE 6/11/19
BRIAN LEE - GM



CIVILTEC
engineering inc.

Civil, Water, Wastewater, Drainage,
and Transportation Engineering
Construction Management • Surveying
California • Arizona

118 West Lime Avenue
Monrovia, CA 91016
Phone: 626.357.0588
Fax: 626.303.7957
Web: www.civiltec.com

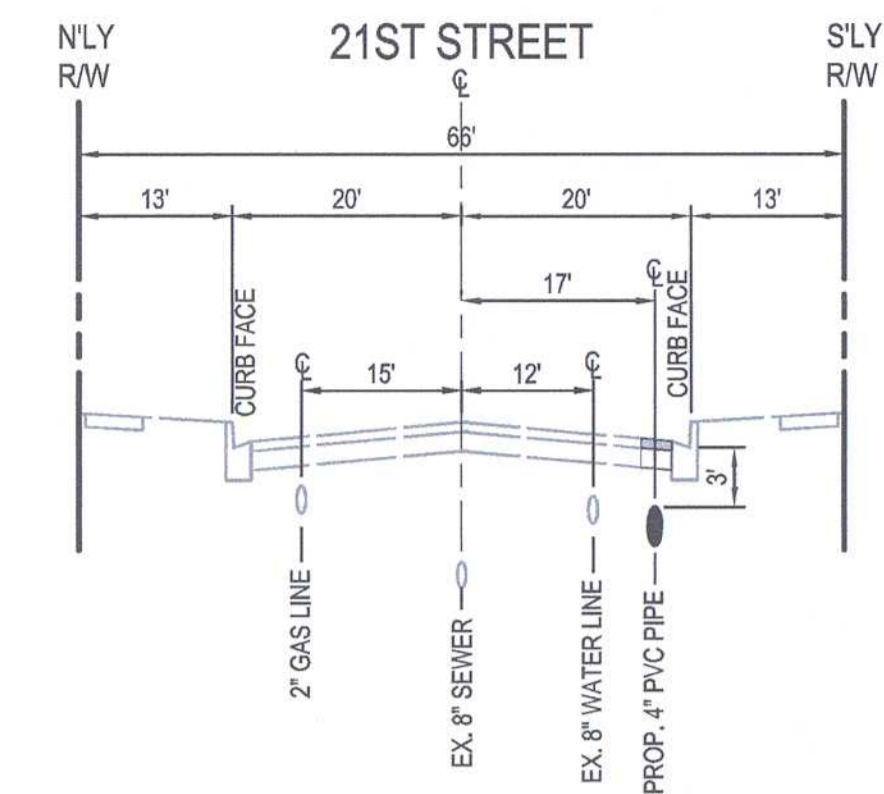
DATE:	JANUARY 2019
SCALE:	AS SHOWN
DRAWN BY:	CIVILTEC
DESIGN BY:	CIVILTEC
CHECKED BY:	TLK



SAN ANTONIO WATER COMPANY
CAMPUS AVENUE WATER LINE PROJECT
PLAN AND PROFILE
CAMPUS AVENUE
STA. 37+00.00 TO STA. 434+82.99

FOR: SAN ANTONIO WATER COMPANY

CT	DRAWING NO.
	CO #1800-P
	SHEET
	5 OF 7
W.O.F.B. FILE NO. _____	



NOT TO SCALE

NOT TO SCALE

3	FURNISH AND INSTALL 8" PVC PIPE, C900 WITH TRACER WIRE.
7	SAWCUT, REMOVE AND REPLACE A.C. PAVEMENT PER CITY OF UPLAND STANDARD CU-Z3-A PER DETAIL 2 ON SHEET 7.
12	FURNISH AND INSTALL 8" GATE VALVE, FLGJMJ WITH VALVE BOX AND COVER PER DETAIL 3 ON SHEET 6.
15	FURNISH AND INSTALL 4" PVC PIPE C900 WATER LINE WITH TRACER WIRE PER DETAIL 4 ON SHEET 6.
16	FURNISH AND INSTALL 4" GATE VALVE, FLGJMJ WITH VALVE BOX AND COVER PER DETAIL 3 ON SHEET 6.
17	FURNISH AND INSTALL 8"x8"x4" D.I. TE, FLG,FLGxFLG, WITH THRUST BLOCK PER DETAIL 5 ON SHEET 6.
23	FURNISH AND INSTALL TEST STATION PER DETAIL 4 ON SHEET 6.

1. ALL STATIONING SHOWN ON THESE PLANS IS BASED ON CENTER LINE OF STREET.
2. ROPE PIPE JOINTS TO MAINTAIN HORIZONTAL ALIGNMENT 2 1/2" MAX. PER PIPE JOINT.
3. CONTRACTOR SHALL POTHOLE TO VERIFY THE LOCATION, DEPTH, AND CONDITION OF EXISTING WATER MAIN AT ALL CONNECTION POINTS.
4. WHEN CONNECTING NEW WATER MAIN, THE CONTRACTOR WILL NEED TO REMOVE INTERFERING PORTIONS OF EXISTING WATER LINE TO COMPLETE CONNECTION.



ECT	DRAWING NO.	CO #1800-F
	SHEET	7 OF 7
W.O.F.B. FILE NO.		-